



DHAN Foundation welcomes you all for this

Lecture Series on **WORLD HERITAGE AND CULTURE**

Lecture No 97– Date 12-09- 2021 Sunday

**SACRED GEOGRAPHY OF NEPAL**

Dr. G.Sethuraman and Dr. V.Vedachalam

## Lecture Series on WORLD HERITAGE AND CULTURE

DHAN Foundation is promoting Heritage Literacy among various stakeholders to sensitize the conservation and Development of Heritage sites by various ways and means like Heritage walk, Development tourism and Village Cultural immersion Programs etc.,

DHAN Foundation is organizing this monthly lecture series on ***World Heritage and Culture*** from 13.4.2013 , 5-7 pm of Second Sunday of every Month for the benefit of Indian citizen especially to students, younger generations and interested individuals who wish to promote our traditional culture and heritage .

# Nepal- Map



# Archaeological Excavations-Findings- Nepal





# Durbar Square- Kathmandu



# Pasupathinath Temple - Kathmandu







Dr.V.Vedachalam at  
Kathmandu

# Durbar Square- Bhaktapur





# Durbar Square- Patan





Patan

# Patan





# Mayadevi temple- Lumbini





# Stupa- Garden- Lumbini



# Inscribed wall- Lumbini

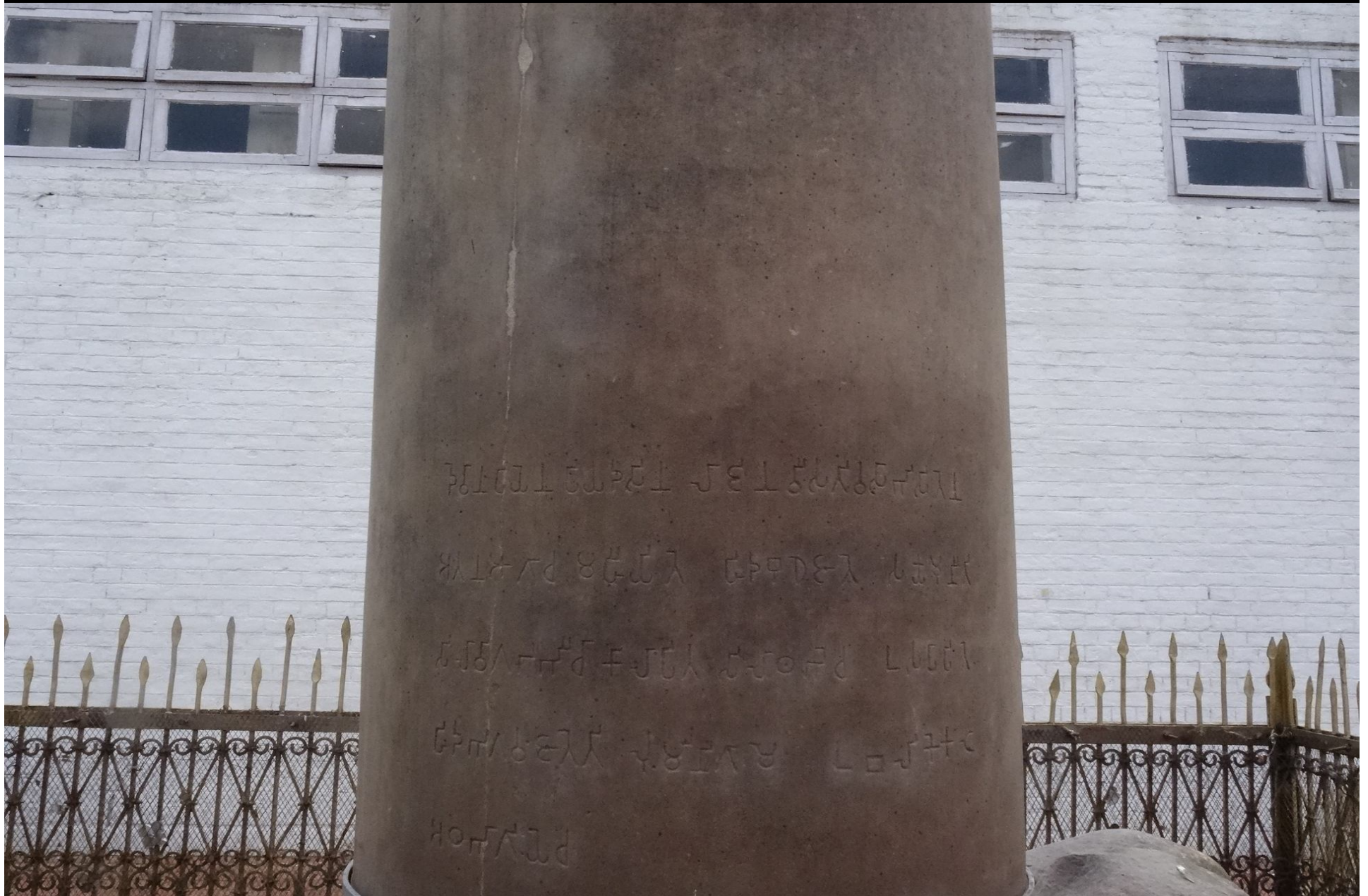




Dr.V.Vedachalam at  
Lumbini- Asoka Pillar



# Lumbini-Asoka Incriptions





# Buddhist Shrine- Swayambunath



# Swayambunath







Swayambunath





Swayambunath





Swayambunath



Dr.V.Vedachalam at  
Swayambunath



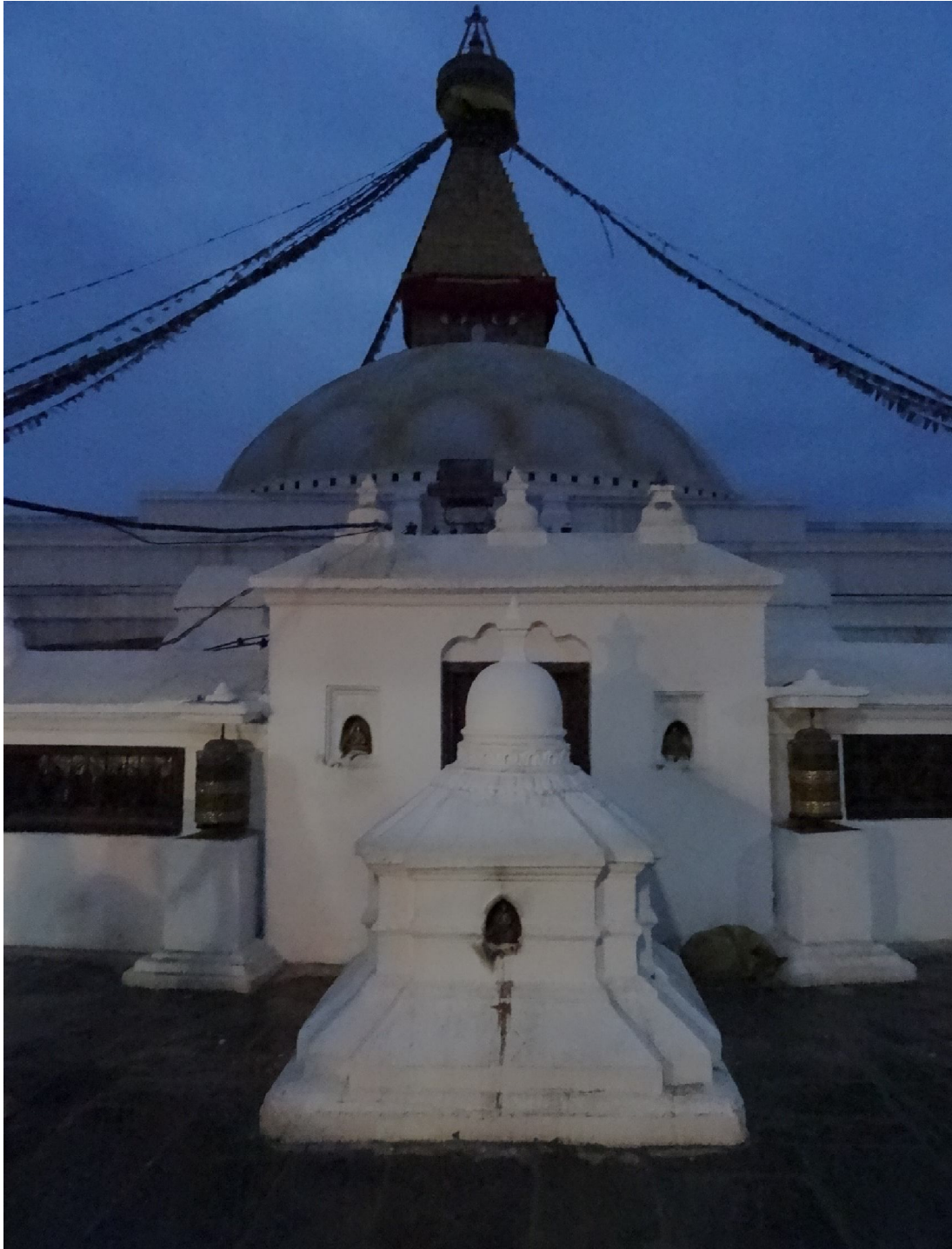
# Stupa- Bodhnath



# Bodhnath







Bothnath



Stupa-Ramagrama-Considered to be one of the eight places in which Buddha's relics were placed





# Namo Buddha- KavropaLanchok





Green Tara-  
Cleveland  
Museum of Fine  
Arts





Buddha  
preaching-  
1642-Nepal



Avalokitesvara –  
Kathmandu- The  
Metropolitan Museum of  
Fine Arts





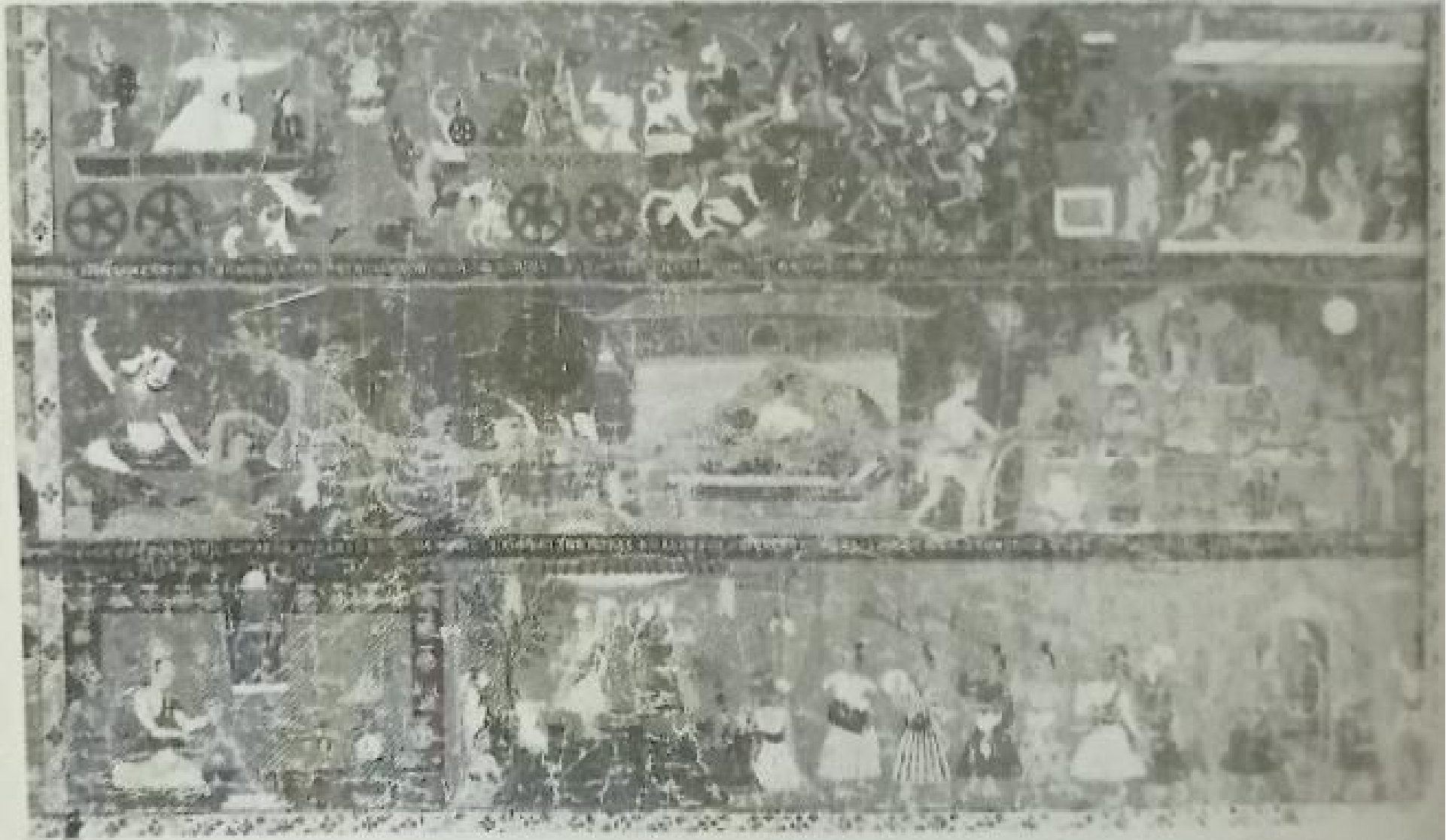
Avalokitesvara-  
Padmapani-  
Kathmandu- The  
Metropolitan  
Museum of Fine  
Arts

Illustrating the legend of Red Avalokitesvara-top-King  
Mahendra Malla-2<sup>nd</sup>-Patan-priests worshipping Amogkapasa-  
astamivrata-celestial chariot of Amitabha heaven-3<sup>rd</sup>-  
procession of Avalokitesvara





# Illustration- Festival of Red Avalokitesvara-Patan-1721





Padmapani  
Bodhisattva-  
Boston Museum



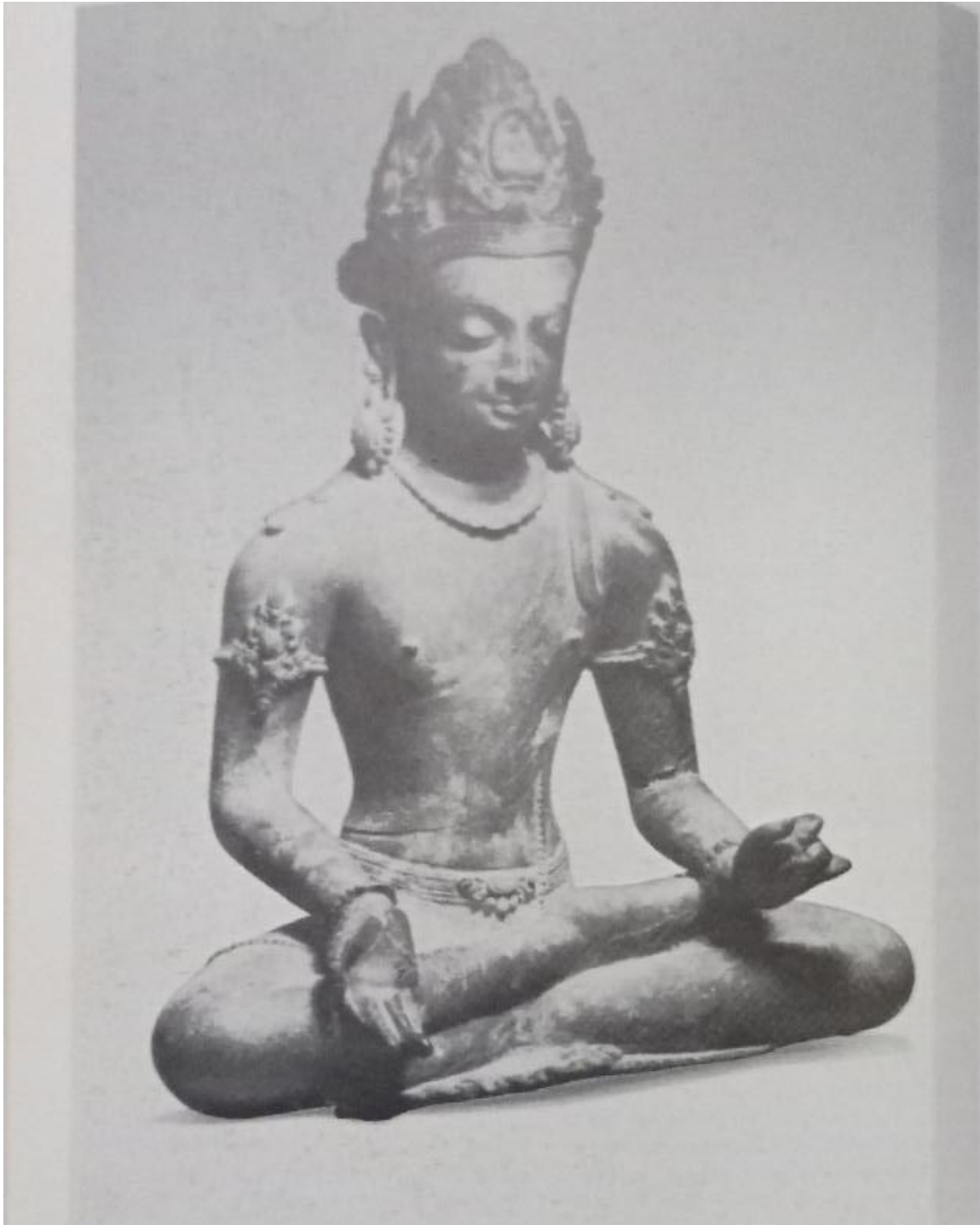


Tara- 11<sup>th</sup>-13<sup>th</sup> cent.  
-Bronze- British  
Museum- London



Gilded Tara-  
14<sup>th</sup> cent. -  
Kathmandu -  
Metropolitan  
Museum of Arts





Seated  
Avalokitesvara-  
13<sup>th</sup> cent.  
Golden Vihara-  
Patan- Bronze



- White Tara- 18<sup>th</sup> cent-  
Copper repoused  
gilded- San Francisco ,  
Asian Art Museum



# Muktinath and Daulagiri



# Muktinath Vishnu Temple





# Muktinath Temple





# Muktinath Temple







Dr.V.Vedachalam at  
Muktinath temple

# Saligram Murti with Consorts- Muktinath







Gandhaki Chandi  
Sakti Pitha-  
Muktinath

# Ranipauwa- Nepal







Padmasambhava-  
Nepal

# Siva Temple- Pasupatinath





# Guhyesvari Temple



# Goddess Taleju Temple- Kathmandu





# Goddess Tripurasundari Temple- Bhaktapur





Goddess  
Tripurasundari-  
Bhaktapur



# Bhairavanath Temple- Bhaktapur



# Bhairavanath - Bhaktapur





# Bhutani Lakanta Temple





# Kaliya Daman- Hanuman Dhoka-Kathmandu







Kalabhairava-  
Hanuman Dhoka

# Bhurti Temple Complex- Dailekh Dt.





# Ram Janaki Temple- Janakpur



# Changu Narayan Temple





Garuda- Cankhu Narayana- 6<sup>th</sup>-7<sup>th</sup> century



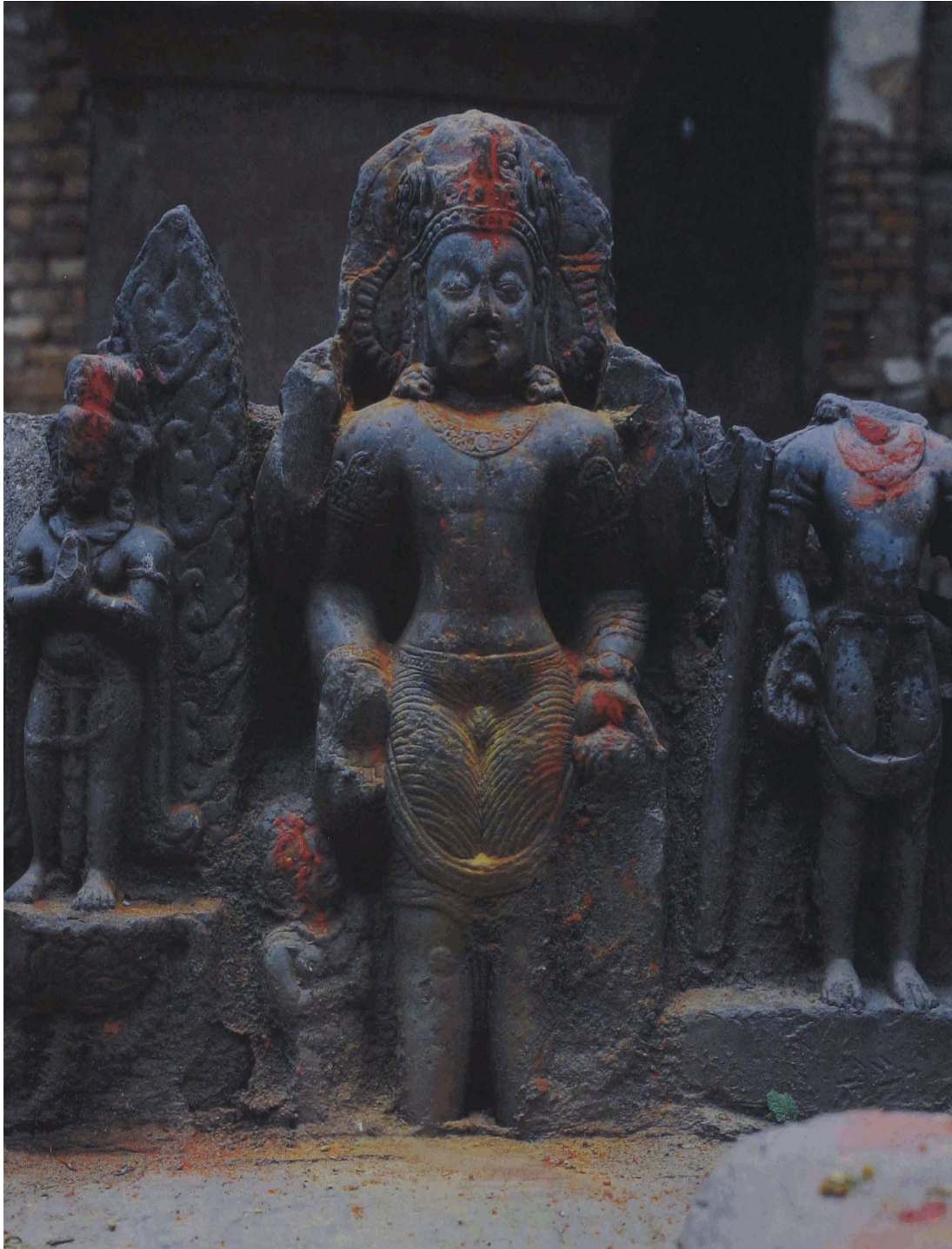
- Vishnu-  
Garudasana-  
9<sup>th</sup> cent. -  
Cankhu  
Narayana





Vishnu Vikranta- Pharping-13<sup>th</sup> cent.





Standing Image of  
Vishnu- 5<sup>th</sup> cent.-  
Pasupati - Nepali  
Museum.



# Caturmuka Linga- Nepal





Caturmuka  
Linga- Nepal





Uma- Mahesvara-  
Nepal- 12<sup>th</sup> cent. –  
Berlin Museum



Portrait of king  
Bhupatindra  
Malla(1696-1722)-  
Copper Repousse  
gilded



# Indresvar Mahadeva Temple- Panauti



# Surya- Indresvar Mahadeva Temple-

Panauti







High-relief wooden  
tunala- Yakshi or  
Salabhanjika with a  
parrot- 13<sup>th</sup> cent.-  
Indresvara Mahadeva-  
Panauti.

# National Park- Chitwan





# National Park- Sagarmatha



# Palace- Nuwakot- Nepal





# National Museum- Nepal







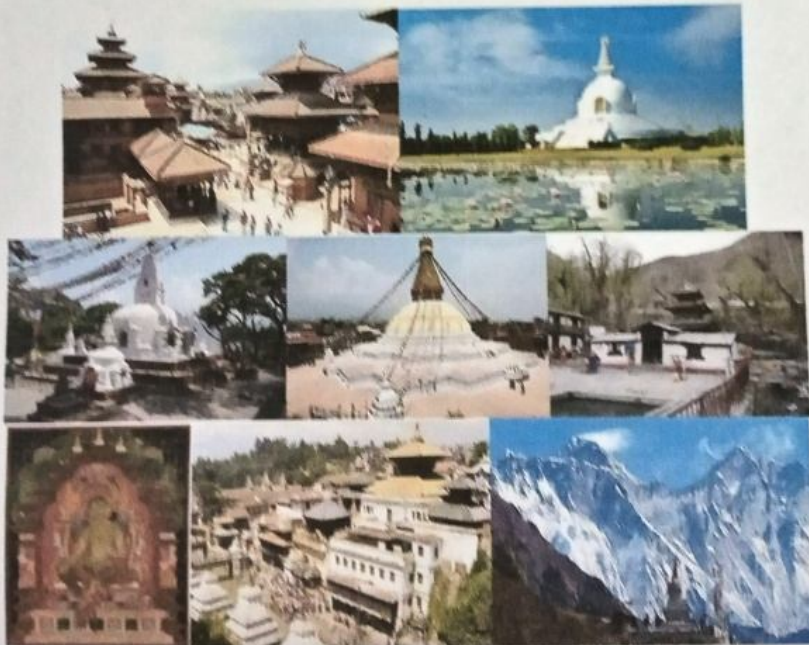
## Lecture Series on World Heritage and Culture

97<sup>th</sup> Lecture on "Sacred Geography of Nepal"

By

Dr.G.Sethuraman, Art Historian and Dr.V.Vedachalam Archaeologist on 5 September 2021,

Sunday, 5.00 pm -7.00 pm at DHAN Foundation, Madurai



Text Document  
For Sharing



Thank you